



The Navigator

March 2020

The Newsletter of the Alamo Squadron IPMS Chapter

The San Antonio chapter of the International Plastic Modelers' Society

A registered 501c-7 organization

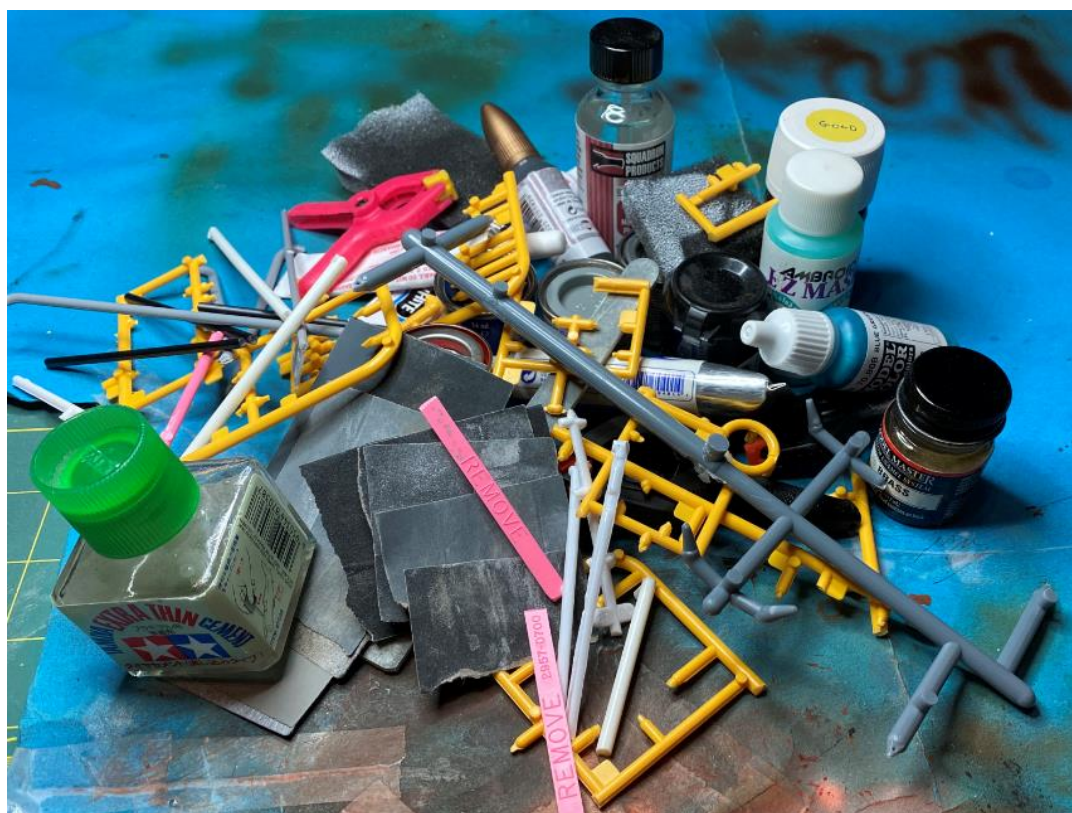
Team Lead for the National IPMS/USA Convention: 2020
IPMS/USA Region 6 Chapter of the Year: 2016

IPMS/USA Region 6 Newsletter of the Year: 2017
IPMS/USA Chapter of the Year: 1999 & 2005



Contents

- * [President's Column](#)
- * [Pics from the Big Show](#)
- * [Feature Build](#)
- * [Some WIPs](#)
- * [On the Horizon](#)
- * [Club Announcements](#)
- * [Our Fearless Leaders](#)
- * [Acknowledgements](#)
- * [One More Thing...](#)



(Remnants from ModelFiesta 39?)

FOR Modelers and BY Modelers ABOUT modeling...

PRESIDENT'S COLUMN

By Craig Gregory IPMS #49320

From the Captain's Bridge...



ModelFiesta 39

You did it. We successfully organized, setup and held ModelFiesta 39 on February 15th. Although the number of participants were down, the show was a success both for the participants and financially.



Two contributing factors for the lower attendance might have been that Valentine's Day was on the preceding Friday and the construction on 410 and Marbach. I understand that we will not have to deal with Valentine's Day for several years. And we will hope that the Texas Dept. of Transportation will be finished by next year.

Thanks to all that helped.

2019-20 Model Building Summit Award

Recognition for the Model Building Summit Award is during the March club meeting. As we recognize those that completed 5 builds (or earned points by supporting the club), let's remember to thank Herb Scranton for sponsoring and organizing this year's program.

2020 Elections

It is election time again. The vote for new club officers will be held during the April club meeting. Nominations for club officers will be held during the March meeting. But you may nominate someone, or self-nominate yourself, by notifying one of your club officers at any time. Please have the permission of the one you are nominating before doing so.

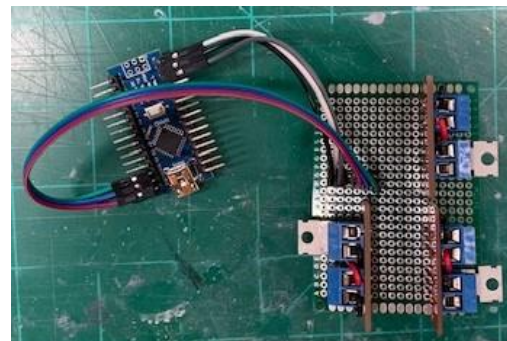
Modeling without Modeling

I sure have been busy this year but not by gluing pieces of styrene to my fingers (I mean together into a model.) I have come to experience that there are some many aspects to this hobby. I started modeling as a kid doing a messy job gluing Revell kits together, no paint, no decals. Just a mess. I took up the hobby again (for a little while) after college. I even tried to use an airbrush during this time. But thanks to Alamo Squadron and its ABC class, I correctly learned basic modeling techniques and have placed both at local and national competitions.

I have been part of the club's leadership team for 1 year serving as your president. I have "instructed" several ABC classes. I have volunteered to serve as the Vendor Coordinator for the last 3 or 4 ModelFiestas and for NATS 2020.

Lately I have been developing an idea for lighting spacecraft and starship models using an Arduino embedded micro-controller. This required me to learn yet another programming language and develop a software framework. I will detail my lighting experiments in an upcoming Navigator article.

My point is that I have been enjoying plastic modeling without gluing anything together.



PICS FROM THE BIG SHOW

HERE IS A LINK TO A SLIDESHOW OF WINNERS FROM THE MODELFIESTA 39 – 2020 EVENT. DICK MONTGOMERY DEVELOPED THE CONTENT SUPPORTED BY PHOTOGRAPHS FROM MIKE HOLSEN AND MATT NEERMAN.

<http://alamosquadron.com/ModelFiesta39/MF39%20Awards.pdf>

THERE IS ALSO A LINK TO A VERY NICE YOUTUBE VIDEO PRODUCED BY LYN STAHL OF METALHEAD MINIS.

<http://www.alamosquadron.com/>



THANKS TO ALL WHO VISITED, ENTERED, JUDGED AND PROVIDED THEIR SUPPORT FOR THE EVENT.

SOME WIPs AT THE LAST MEETING

(Photos courtesy of Miguel Lopez)



FEATURE BUILD

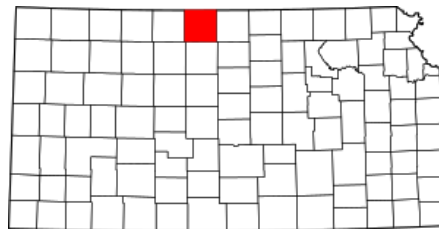
Granddad's Pickup: 1/25 1955 CHEVY STEPSIDE PICKUP TRUCK

by Dana Mathes

*(Ed: Dana showcased this model as part of the "Works in Progress" portion of the January 2020 club meeting and a sneak-peek pic appeared in the February 2020 newsletter. The model **placed first** at ModelFiesta 39 in the 440 – Trucks Commercial/Emergency category and **won** the "Its Personal: Every Model has a Story" theme sponsored by Dibble's Hobbies.)*



Last year I built a model of my cousin's farm truck. As I thought about other vehicles linked to family members, my paternal grandfather's old green pickup came to mind. My Granddad, Lloyd E. Mathes (1887-1977), raised cattle and grew wheat in northern Kansas (see map below) on the land that his grandfather, a German immigrant, homesteaded in 1875. The cabin where the famous song "Home on the Range" was written is in the same county. I must confess that I've never seen any antelope there playing with the deer, as the song would have it.



Smith County, KS

This model has two personal connections for me: my Granddad and my brother. Granddad used a sturdy 1955 Chevy pickup for work on the farm. It was the first vehicle that my brother and I ever drove. During visits to the farm, we could "find 'em and grind 'em" in the pasture: a place where we could do little harm.

I built this model to give to my brother as a reminder of good times. We both searched for a picture of the pick-up but were unable to lay hands on one. So, the model depicts the rugged truck as it looked (c.1975), based on our collective memory, out in the pasture ready for fence repairs. Besides playing snooker and enjoying Red Man tobacco, Granddad was known to like Pabst Blue Ribbon and Coors beer on occasion, so in his honor I've included a discarded Coors carton in the truck bed.

Project Description

This is a kit-bashed model with many added details. AMT offers two kits for the 1955 Chevy stepside truck. I used the Cameo kit for the basic truck and then supplemented it with specific parts from the

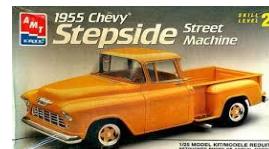
Street Machine it to create a stock truck. There were no frills on the old pickup as it was a working farm truck.

Kitbash Origins:



← 1/25 1955 Chevy Cameo Pickup (AMT) was the base kit.

1/25 1955 Chevy Street Machine (AMT) kit provided the rear fenders, tailgate, taillights, bumpers, grill, hitch, mirrors, and steering column. →



References

As I had no pictures to refer to and only some recollections to go on, I sought out references to help make the model accurate. My thanks go to Herb Scranton III for his technical consultation and the parts he provided that enabled the completion of this project. In addition to memories and Herb's help, I inspected a junked Chevy Stepside pickup and referred to OEM drawings and internet pictures of restored vehicles. EBay and Tractor Supply websites were helpful for photos of parts and farm tools.

Reference Photos:



*Above are two reference photographs of **Unrestored Trucks**.*





*Above are four reference photographs of **Restored Trucks**.*

Detailing

The kits were both nicely done and offered a good foundation of the project. However, I wanted to get closer to what I remembered the truck looking like, so I added several scratch-built and accessory items.

The most difficult detail to add was the side-mounted spare tire. This involved the removal of the under-bed spare tire rack from the kit, the modification of the left fender, and the fabrication of the spare tire rack itself. As noted, one advantage of doing an automotive project is the wealth of detailed photographs available on the Internet. There are dedicated websites to Chevy trucks. Photos of the spare tire rack were also on eBay.

After consulting these photos and OEM drawings for the spare tire mount, I constructed the mount out of brass wire, plastic sheet and angle, and some PE parts from my spares box. To undertake the surgery on the fender, I first mocked-up the placement of the tire, the bed, and the fender and then traced out the tire outline on the fender. I then drilled a series of small holes along the line and then cut the chunk out of the fender with a saw. To make the dished part of the fender (under the tire), I cut out a section of an unused Cameo kit fender and glued it into the gap in the fender upside down. Using sprue dissolved in liquid cement, I filled in around the joints and sanded it until it evenly matched the circumference of the tire. The spare tire mount was then glued onto the bed and the fender was glued in place over it. The under-bed spare tire rack provided in the kit was removed from the chassis by drilling small holes around it and sawing it out. Some filing and sanding made it look like it had never been there.



**Modification of Fender
and Mount for Spare -
Reference and
Construction Photos**



Other scratch-built details included: a floor-mounted gear shift lever, floor mats, tailgate chains, an antenna, and taillight wires. I chose to ad-lib a bit by creating homemade, non-OEM floor mats from AFV Club textured film (designed for anti-skid texture on tank models). I didn't remember what the real ones looked like, but knowing my Granddad, it was unlikely that worn ones would have been replaced with ones from the dealer. Reference pictures of some old trucks showed that this was common practice.



Punched discs from an old soda can (free aluminum sheet) were placed as reflectors behind the front headlight lenses. More PE parts from my spares box were used for the tailgate chain fittings and to make hinges and latches for the toolbox. Purchased accessory details were used for the instrument cluster faces and the license plate. I researched Kansas license plates and got as close to the ones used in the mid-70s as I could.

A working farm truck rarely has an empty bed. My recollection of the truck required that it have tools and supplies and be on the job. Modeling these details was almost another project into itself. Herb provided the spare tire, tools, oil cans, and toolbox from his spares box. As noted above, I consulted many websites, such as Tractor Supply's on-line catalog, to get dimensions, colors, etc. for these items. eBay has pictures of vintage tools, toolboxes, and oil cans.

The crate side and the lumber are made from purchased scale lumber. The jack block and the wooden fence posts come from skewer and pop sickle sticks. The steel posts were fabricated from plastic angle and sheet. The home-made post driver, which I was more familiar with as a teenager that I wanted to be, was built from plastic tube and a discarded pencil lead container cap. The old seed bags come from a paper sack and the rags are tissue paper. I attempted to make a Redman tobacco pouch to put on the dashboard, but I couldn't quite pull it off, so a generic rag took its place. I was able to locate 1/25 scale beer cartons online which could be printed. Pabst Blue Ribbon was not among the selections, so Coors it was. Decals to represent oil can labels and a window sticker came from the spares box.

Staging the Accessories



Painting and Finishing

On-line references provided the OEM paint colors. They were available from scale modeling vendors as enamels. The truck being modeled had seen about twenty years of service on the farm. I did not remember the truck being damaged or very dinged-up, so I did very little in terms of putting dents in it. However, the paint was certainly faded and reflected its time in the sun and weather.

The paint sequence was as follows: primer, bare metal color on the areas where I intended show the paint worn off, rust colors on the areas to be shown rusted, pre-shading of the panels with dark gray, base color coat, multiple color modulation colors applied randomly on panels, and color modulation colors (very light) sprayed specifically on the roof, tops of the fenders, etc. The color modulation was done by progressively lightening the base green color with the ivory color of the bumpers and light tan. It took me three tries to get the paint right on the truck body and bed. The interior surfaces had much less color modulation applied, with the dashboard receiving the greatest amount. An acrylic matt varnish was used as a seal coat for the steps to come.

Interior and Chassis Prior to Weathering



Painting the Bed of the Truck before the Base Color Coat Application



Primer, Pre-Shading, and Rust Undercoat Applied Prior to Base Color Application





Base Color Applied with Color Modulation

(Model is staged with subassemblies on the base and with unpainted accessories)



A few paint chips were then painted on with various acrylic colors and artist pencils. The next step in the weathering was an AK streaking grime filter. A series of oil applications came next: a multi-color dot matrix, dark brown pin washes around details, and rust-colored oils on those areas that were painted rust colors previously. Dry brushing was done with various Modelmaster® metallizer colors and shades of tan.

After all the various detail parts were glued on, some more work was done with artist pencils on the details and some pastel chalks on the tires, wheel wells, and lower portions of the truck. AK oil and gas colors were applied to near the hood, on the oil cans, and near the oil filler cap.

Weathering the Interior with Dot Matrix Oil Treatment



Interior and Chassis after Weathering



Weathering the Cab and Bed with Oil Dot Matrix



Prior to this step, some sanding was done with fine grade sandpaper to take off some of the base coat on the roof, hood, and fender surfaces to reveal the undercoats. A clear seal coat was then applied.



Weathered Sub-Assemblies Ready for Final Assembly



Final Assembly of the Model

Once the truck was assembled and the accessories added, additional weathering was done with artist pencils. The base was made from a board covered with model railroad grass cover.

Finally, A Kansas pick-up would not be a real truck without some bugs on it. Large grasshoppers were ubiquitous on the farm. So, I used acrylic greens and yellow to paint some insect splatters on the windshield, bumper, grill, and hood.

Remembering the truck with my brother was a lot of fun. The ultimate seal of approval came when he, as demanding a judge as you would ever encounter at a contest, looked at a picture of the model and pronounced it accurate.



Completed Model with Base and Accessories





One Page Kit Review *(an update)*

by Sam Casas IPMS #40033

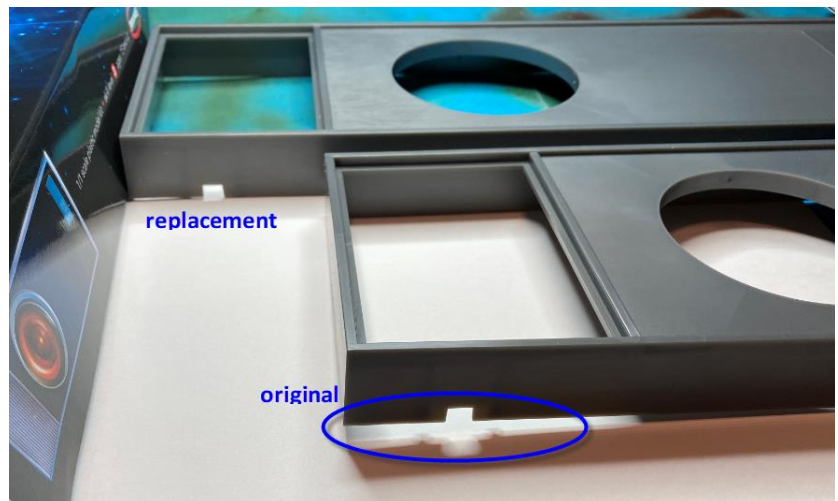


In the January 2020 issue of *The Navigator*, I provided a short one-page review of the 1:1 scale plastic replica of the HAL 9000 communication portal. I ended the review with a comment regarding a warped part and my hesitancy to right the “curve”. Perhaps a nit?

I submitted an email request to Moebius (customerservice@moebiusmodels.com) asking for a replacement and, lo and behold, I received a reply about two months later confirming a replacement part was being provided. A week later the part arrived via USPS.

Below is a photo of the original and its replacement. Still a nit?

My heartfelt appreciation to Moebius and their customer care principles. Good folks to do business with my nit and all.





ON THE HORIZON

Kit of the Month

Each month a club member can bring one of their recent acquisitions to the meeting and open its box to let others peek inside. With a few brief comments and questions answered we will get to know what's in the box and, chances are, rush home to order a copy. When you are ready to share your experience and thoughts, contact and coordinate with Craig Gregory 541-377-188 or at craig.jonathan.gregory@gmail.com.

2020 Monthly Club Contest Themes and Presentation/Demos/Programs

Date*	Contest Theme ¹	Program ²	Presenter
Mar 5	Open	Aircraft Rigging	Dick Montgomery
Apr 2	Open	Hydro-dip Technique	Paul Blackmon
May 7	The Century Series	TBD	
Jun 4	Open	TBD	
Jul 2	Nats 2020 Group Build Contest	TBD	

*First Thursday of the month.

Source: ¹ <http://www.alamosquadron.com/monthly-contest.html>

² <http://www.alamosquadron.com/program-schedule.html>

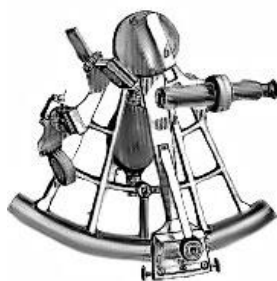
Upcoming IPMS Region 6 Area Club Events

Provided by Dick Montgomery IPMS #14003

(Event added since last newsletter issue)

Date	Title	Contact	Location	Address
March 7, 2020	Showdown 2020 An Automotives Show http://themcma.net/Club_Contests.php	Len Woodruff – sbcsystems@grandecom.net	Children's Health Star Center	12700 N. Stemmons Fwy Farmers Branch, TX 75234
March 21, 2020	RiverCon IX Contest includes all modeling genres. Vendor Area	Andy Bloom bloom4him@hotmail.com	LSUS University Center	One University Pl Shreveport, LA 71115
April 4, 2020	Great South Tigerfest XXV	Richard Marriott – rmpaintingmusic14@gmail.com	St. Jerome Knights of Columbus Hall	3310 Florida Ave, Kenner, LA 70123
April 18, 2020	Route 66 Model Expo https://www.tulsaipms.org/ Contest includes all modeling genres. Vendor Area www.tulsaipms.com	Greg Kittinger - greg.kittinger@gmail.com	Bixby Community Center in Bixby OK.	211 N Cabaniss Ave, Bixby, OK 74008
April 25, 2020	Modelmania 2020 Contest includes all modeling genres. Vendor Area http://www.ipms-houston.org/?page_id=11	Ken Jackson – kw.jackson.1@hotmail.com	Stafford Center	10505 Cash Road, Stafford, TX 77477
June 6, 2020	Scalefest 2020 Contest includes all modeling genres. Vendor Area http://www.ipmsnct.net/Scalefest.htm	Randy Spurr- scalefest@gmail.com	Grapevine Convention Ctr.	1209 S. Main, Grapevine, TX 76051
June 13, 2020	SoonerCon 2020 http://www.ipmsmetrookc.com/soonercon-2020.html	Richard Fisher – challenger@challenger-n-scale.com	Council Road Baptist Church – Building is named “The Cube” north of main church building	7903 NW 30th Bethany, OK 73008
June 20, 2020	Northshore Scale Modelers Expo https://northshoremodelers.net	Warren Dickerson – northshore.scale.modelers@gmail.com		Covington, LA 70433
July 11, 2020	HAMS 14 th Annual Model Car Show & Contest An Automotives Show. https://www.ipms-hams.org/	Rob McQuown – Robert.mcquown@sbcgloble.net	Cypress Creek Christian Community Ctr.	6823 Cypresswood Dr, Spring, TX 77379

July 29-Aug 1, 2020	2020 IPMS National Convention Convention website: http://www.nats2020.com/ IPMS-USA website: http://www.ipmsusa.org/ 4 Days of seminars, presentations, massive vendor area, local tours, great food, and model contest – All Located Deep in the Heart of Texas!	 <p>COME AND MAKE IT IPMS/USA NATIONAL CONVENTION SAN MARCOS, TEXAS JUL 29 - AUG 1, 2020</p> <p>Convention Dir - Len Pilhofer – director.nats2020@gmail.com</p> <p>Vendor Coord - Craig Gregory - vendor.nats2020@gmail.com</p>	Embassy Suites & Convention Ctr.	San Marcos, TX (between Austin and San Antonio) 1001 E McCarty Ln San Marcos, TX 78666
------------------------------	---	--	---	---



CLUB ANNOUNCEMENTS

February Meeting Club Contest Results

Theme: "Fabulous 50s" (?)

(Photos courtesy of Miguel Lopez.)



**1st – Kent Knebel:
1/48 TBM-35**



**2nd – Julio Caro:
1/144 272-200**



**3rd – Rob Booth:
1/48 RCN Sea Fury**

Next Club Meeting

Thursday: March 5, 2020 at 7:00 PM

Location: Northside Ford of San Antonio, 12300 San Pedro 78216

Newsletter Article Contributions

Alamo Squadrons' newsletter, "*The Navigator*", is published monthly by the IPMS/USA Alamo Squadron club of San Antonio Texas intended for the enjoyment of the members of Alamo Squadron and its friends around the world. Articles, product reviews, news items, and other hobby-related contributions are most welcome. Send written text files or photos and web site URLs as well as any overall comments/suggestions feedback to our editor, Sam Casas at scasas002@satx.rr.com.

Next Issue: April 2020

Target Release Date: Sun Mar 29

Article/Photo Submissions Due: Fri Mar 27

Website Biographies of Club Members

This is a way for members to learn a little bit of modeling-related information of their club mates to facilitate the sharing of knowledge and techniques in all modeling genres and various areas. In no way is this mandatory and only if you wish to share your info with other club members should you participate. Be aware whatever is posted on the Alamo Squadron website becomes open to the all the world... there are no security controls on our website. If you wish to have your bio published, please reach out to Craig at craig.jonathan.gregory@gmail.com. Here is a link to the bios already on file for your review and for others to verify that their information is correct: alamosquadron.com/members.html

OUR FEARLESS LEADERS

Executive Board 2019-2020



President

Craig Gregory IPMS #49320



Vice-President

Len Pilhofer IPMS #49932



Treasurer

Chris Settle

About Alamo Squadron

IPMS/USA Alamo Squadron was founded on November 17th, 1977 in San Antonio, Texas, for the enjoyment of building scale models and the camaraderie of its members. It is a hobby-centered social organization which, at its core, is focused on scale modeling of all kinds. It is an excellent source of information for those who wish to enhance modeling skills and improve modeling techniques and is open and inviting to visitors/guests at all skill levels with a variety of modeling interests. Annual dues are \$24.00 a year paid to the Club Treasurer on September 1st of each year.



QR Code for the club website.
Scan it with your cell phone's QR software to get to our web site!

www.alamosquadron.com



QR Code for the club Facebook Page. Scan it with your cell phone's QR software to get to our home on FB.



NATIONAL MEMBERSHIP

IPMS/USA is an organization dedicated to the hobby of Scale Modeling. Yearly membership includes a hard copy of the outstanding IPMS Journal mailed out six times a year, which is full of stories of interest on modeling subjects such as aircraft, armor, automotive, ships and figures. There are full listings of IPMS contests and swap meets, hints and tips articles and kit reviews. Being a member also allows one to participate in IPMS/USA sanctioned Regional Contests and the world-famous National Convention held each summer. You'll also have access to the online Member's Forum where a wide variety of society and modeling topics are discussed. In addition, many hobby shops offer discounts to IPMS/USA members. Check out the www.ipmsusa.org website for more information.

Note the change to the IPMS mailing address:

IPMS/USA MEMBERSHIP FORM			
IPMS No.:	Name: _____		
Address: _____	If Renewing	First	Middle
City: _____	State: _____	Zip: _____	
Phone: _____	E-mail: _____		
Signature (required by P.O.): _____			
Type of Membership	<input type="checkbox"/> Adult, 1 Year: \$30 <input type="checkbox"/> Adult, 2 Years: \$58 <input type="checkbox"/> Adult, 3 Years: \$86		
<input type="checkbox"/> Junior (Under 18 Years) \$17	<input type="checkbox"/> Family, 1 Year: \$35 (Adult + \$5, One Set Journals)		How Many Cards? _____
<input type="checkbox"/> Canada & Mexico: \$35	<input type="checkbox"/> Other / Foreign: \$38 (Surface) Checks must be drawn on a US bank or international money order		
Payment Method: <input type="checkbox"/> Check <input type="checkbox"/> Money Order			
Chapter Affiliation, (if any): _____			
If Recommended by an IPMS Member, Please List His / Her Name and Member Number:			
Name: _____		IPMS No.: _____	
IPMS/USA		PO Box 1411	
Join or Renew Online at: www.ipmsusa.org		Riverview, FL 33568-1411	

ACKNOWLEDGEMENTS

Support Our Local Hobby Shops...

...for models, paints, books, decals, tools and all your modeling needs!

Special Orders

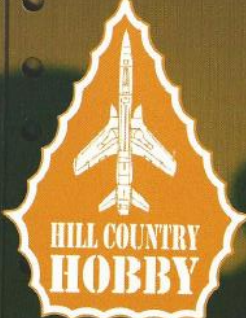
Mail Orders

Dibble's Hobbies
The Excitement IS BUILDING!

1029 Donaldson Ave.
San Antonio, TX 78228
210-735-7721

Tues. - Sat., 10am - 6 pm
www.dibbleshobbies.com
dibbleshobbies@gmail.com

Jeff, Mike and Joannie
dibbleshobbies@gmail.com

**HILL COUNTRY
HOBBY**

9355 BANDERA RD. #109
SAN ANTONIO, TEXAS 78250
(210) 681-2007

DAVID SCHMIDT
66ZOMBIES@GMAIL.COM

OPEN
TUES & WED: NOON - 6 P.M.
THURS, FRI & SAT: 10A.M. - 7P.M.
SUN: 1P.M. - 5P.M.

CLOSED MONDAY

David Schmidt
66zombies@gmail.com

And our Meeting Site Sponsor:





ONE MORE THING...

Let's not forget our clubs' namesake

March 6, 1836



Recommended reading:

Sam Houston and the Alamo Avengers: The Texas Victory That Changed American History by Brian Kilmeade

