



The

Navigator

February 2022



CSM 35001



1/35 Scale



Lanchester Armoured Car

BRITISH
WWI
ARMOUR

MODEL REVIEW

Also in this issue:

ModelFiesta Gallery Part 1





OUR MONTHLY MEETING SPOT

Meeting:

Jordan Ford

13010 N Interstate 35, San
Antonio, TX 78233

Date: Thursday,
January 10, 2022

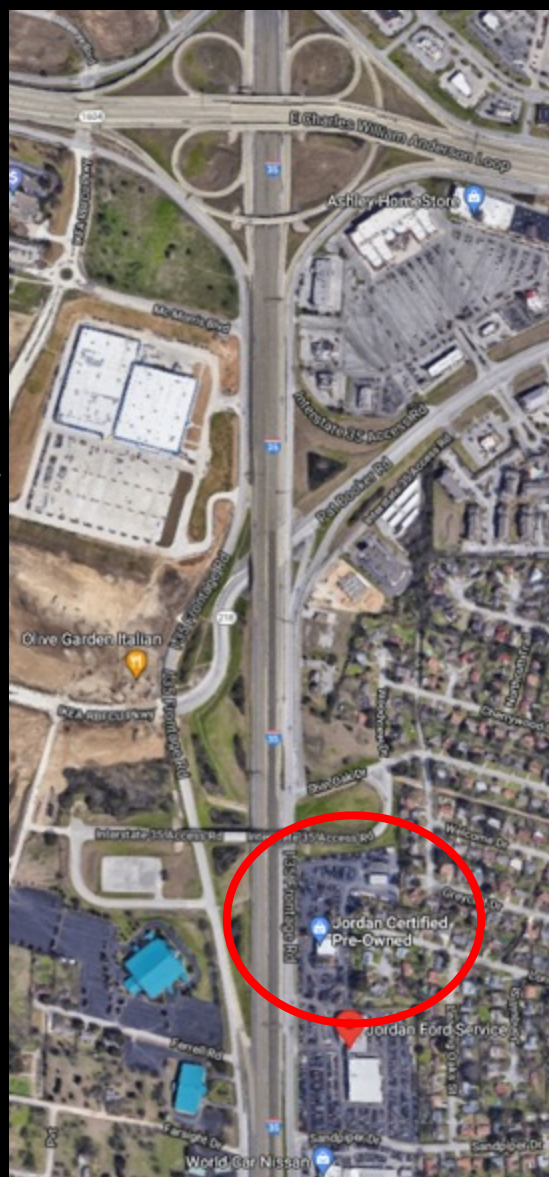
Time: 5:15 PM – 7:50 PM

Demonstration: Beyond the Basics,
Taping and Painting by Keith Rule

Model Contest Theme: Open

Health Protocol: Masks Optional

At press time, a video conference
call setup is considered as an
alternative venue for
remote/online participants this
Thursday evening. Watch for an
email announcement.





LEADERSHIP THOUGHTS

Thank you so much for your work to plan and execute ModelFiesta 40! It was a smashing success. The extensive planning and teamwork at the contest paid off as the vast majority of folks enjoyed the event, especially the new venue. I was very proud of how our club worked together and managed problems with efficiency and grace. Here are some statistics for Model Fiesta 40:

- Contest Entries: 653
- Contestants: 139
- Vendors: 54
- General Admission: 465 (over 12 year, not including vendors or contestants)
- Estimated Total Attendance: 750-800 (including club members, vendor helpers, children, etc.)
- Donations to Models 4 Troops: 130 items, including 81 kits

In addition, the club more than covered its operating costs for the event, which included several one-time expenditures this year related to the new venue. The new raffle format was a big hit. Many of our members won awards, most notably Best of Class wins by Stan Spooner (Space/Sci-Fi) and Eric Syverson (Miscellaneous).

The event planning team is debriefing the experience in order to make MF 41 (tentatively

scheduled for February 2023) even better. If you have additional observations and suggestions, please contact one of the club officers. Thank you again for your donation of time and modeling items! The election of the 2022-2023 club officer positions will take place in April, with nominations made at the March meeting. In addition, the ModelFiesta Contest Director role is also open. Please consider taking on a leadership position in our club.

Our next meeting is on Thursday, February 3. We are starting at 6:00 p.m. in order to make the meeting feel less rushed.

Brett Scholten will continue the discussion regarding club shirts. Bring your models for the WIP discussions (gong and all). The Kit of the Month table will be open for business. Prior to the meeting, Lee Forbes will be available to review models per the IPMS/USA judging protocol. Keith Rule will present a demonstration entitled "Taping and Painting Graphics, Beyond the Basics." The monthly contest theme is "Open." It promises to be a good time indeed!

See you soon,
Dana Mathes



FROM OUR SOCIAL MEDIA



No... not a model kit from Mike or Jerry... but a ~6' RX-78 Gundam figure at the Hobby Town store in Austin, Texas.



Tamiya 1/48 Sea Harrier by Len Pilhofer



Luis Lacor 3D printed mecha



5

Lanchester 4x2 Armored Car by Dana Mathes



Subject

Shortly after WWI broke out in August 1914, the British military contacted a variety of automobile makers for the purpose of developing armored cars based on existing civilian car designs. Both Rolls Royce and Lanchester (now part of Jaguar Land Rover) were among the first companies contacted. The Royal Navy, spurred on by Winston Churchill, who was then leading the Admiralty, worked with Lanchester to develop an armored car based on its successful "Sporty Forty" (see below).



The new military vehicle was powered by a 6 cylinder, 60HP engine. Weighing in at 4.8 tons, it was 16' long, 6'4" wide, and 7'6" high. The car was armed with one 0.303" turret-

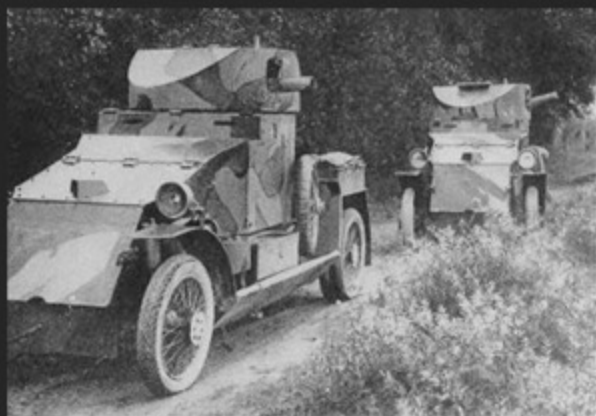


mounted machine gun. The crew was protected by 0.31" thick armor. Among the fastest of the WWI armored cars, it could reach 50 mph and had a range of 180 miles. A four men team operated this machine. A heavier post-war version of the vehicle, known as the 6x4 car had a larger engine, more armor, and a more powerful machine gun.

In Royal Naval Air Service (RNAS) markings, the first operational Lanchester 4x2 cars began rescuing downed pilots in France during the early months of 1915. These reliable vehicles were soon adapted for scouting missions. The development of the trench system severely limited their utility, so the cars were deployed to other regions, the first being Russia, from 1915 till shortly after the 1917 Russian Revolution. Perhaps their greatest service was with the British Army in the Middle East, particularly in present day Iraq. Photos of the cars in WWI service may be seen below.



The boards carried along the sides of the hull were not running boards. Called ditching boards, they were used for managing muddy situations like this one.



These Lanchester cars wear the camouflage pattern of the Belgian Army.

The Base Kit and Construction

Latvian-based Copper State Models has made a name for itself by developing high-quality kits of WWI subjects, both armored cars and aircraft. Their quality and detail approximate that achieved by the now defunct Wingnut Wings company. The base model for this project was their 1/35 Lanchester Armored Car (see below). It was given to me by a friend in our local model club, along with the photo-etch (PE) detail set for the kit, also by Golden State Models. A challenge came with the kit, as I was told: "I want to see what you can do with it."



The instructions are quite similar to the detailed brochures you see with a Wingnut Wings model. With almost no flash on the parts, the molding is crisp and sharp. The fits are precise. One must get the alignment, especially the suspension, correct in each step, lest you compound your errors and find yourself in trouble in later steps. The sequence I used to build the kit was generally in line with what was recommended, although I left the wheels, ditching boards, stowage parts, and machine gun off so they could be painted separately. The suspension parts and headlamp assemblies are very delicate such that they demand special care. The kit provides modifications and markings for vehicles operating in Belgium, the Middle East, and France.

I employed about sixty percent of the PE parts. The rear mudflaps were left off as almost none of the period photographs showed them on the operational cars. Many references depicted stowage on the vehicles, so I used some items from a 1/35 Tamiya WWI Infantry set and some



other gear scrounged from my spares box: wine bottles, pioneer tools, etc. Wire was installed to represent the headlight cables. Punched aluminum discs from a soft drink can served as headlight reflectors. Lenses were made from clear plastic sheet. The staging photo below shows the unpainted model on the base.



Life was tough at the front. Most of the Lanchester cars showed damage to their fenders and headlights. So, this model proudly wears some minor mistreatment too. See photo below.



Finishing

I chose the basic Admiralty Gray scheme that the first RNAS Lanchesters wore. Unable to find a definitive match for the color, a mixture of Tamiya acrylics was concocted that was very close to the paint chart provided in the instructions. After receiving a primer coat and some pre-shading with Tamiya NATO Black, the model was painted in "Admiralty Gray" with many color-modulated, lightened shades. Tamiya buff, light gray, and white were utilized to modify the base color. The pictures below show the model after pre-shading and before the color coats.



Model Fiesta Gallery **Part 1**





10







Club's E-Board 2021-2022

Information

IPMS/USA Alamo Squadron: The Club was founded in 1977 in San Antonio, Texas, for the enjoyment of building scale models and the camaraderie of the members.

The Alamo Squadron has been putting on ModelFiesta since 1981. Locations have included the Wonderland Mall, a Holiday Inn, the Seven Oaks Motel & Convention Center, the Live Oak Civic Center and the new location since 2013, the San Antonio Event Center.



President:

Dana Mathes
huskercat@gmail.com



Vice-President:

Eric Syverson
esyver@zoho.com



Treasurer:

Christopher Settle
csettle99x@yahoo.com



Editor:

Gerardo "Jerry" Escobedo
paperjerry3@gmail.com



[Alamo Squadron Facebook CLICK HERE](#)



IPMS Region 6

Events

All-new hyperlinks! Click them all!

Date	Name	Location
March 5, 2022	<u>Showdown 2022</u>	Farmers Branch, Texas
March 19, 2022	<u>RiverCon XI 2022</u>	Shreveport, Louisiana
April 2, 2022	<u>Great South Tigerfest XXVII Scale Model Contest</u>	Kenner, Louisiana
April 9, 2022	<u>Tulsa Modelers' Forum Route 66 Model Expo</u>	Bixby, Oklahoma
April 30, 2022	<u>Modelmania 2022</u>	Stafford, Texas
May 21, 2022	<u>CALMEX 35</u>	Sulphur, Louisiana





The Alamo Squadron Newsletter is published monthly by IPMS/USA Alamo Squadron of San Antonio, Texas, for the information and enjoyment of the members of the Alamo Squadron and its friends around the world. Articles, reviews, news items, ads to buy, sell or trade, and other contributions are very welcome.

Send text file, photos and web sites to
Jerry Escobedo:
paperjerry3@gmail.com

IPMS Membership



International Plastic Modelers' Society/USA Membership Application / Renewal Form

New ☐ Renewal ☐ IPMS #:

Name:

Address:

City: State:

Zip Code:

Phone: E-Mail:

Chapter Affiliation, if any:

Junior (17 years or younger) \$17.00 Date of Birth:

Adult One year \$30.00

Two years \$58.00

Three years \$86.00

Canada & Mexico \$35.00

Foreign Surface \$38.00

Family (1 set of Journals) ← Adult fee + \$5.00 # of cards?

Your Signature:

If recommended by an IPMS member, please provide his/her:

Name: IPMS #:

PAYMENT OPTIONS:

Cash ☐ Amount:

Check ☐ Check #: Amount:

Billing Address, if different than above -

Address:

City: State:

Zip Code:

Applications should be printed and mailed to: IPMS/USA, PO Box 1411, Riverview, FL 33568-1411



15

**He might be thinking of
another woman...**



**Do I do Chipping with the sponge
or with the airspray technique?**

Support your Local Hobby Shops!

For models, paints, books, decals, tools and more!

Special Orders
Mail Orders

dibbleshobbies@gmail.com

DIBBLE'S HOBBIES
Trans, Planes, and Other Things

1029 Donaldson Ave.
San Antonio, Texas 78228

Tues.-Sat. 10am-6pm
(210) 735-7721

dibbleshobbies.com



hillcountryhobby.com



lionhearthobby.com



<https://www.facebook.com/collectmoretoys>

Alamo Squadron – FEBRUARY 2022
www.alamosquadron.com