

THE ALAMO SQUADRON

NAVIGATOR AUG 2024

<http://www.alamosquadron.com/>



By now the IPMS Nationals in Madison, Wisconsin is over. A huge congrats to Mario Fernandez for winning Website of the Year at the Awards Banquet. Mario has worked hard on the website and deserves all

the accolades. I find myself surrounded by several talented and devoted people that make myself and Alamo Squadron look good. Again, congratulations to Mario.

By the time this issue is published, the Space City Shootout (Automotive only) held July 27 at the Bay Area Community Center, 5002 NASA Road One, Seabrook, TX, 77586, will be over. I know there are several members, including myself, that will be attending. I look forward to reports from those who attended the IPMS Nationals.

The Model Fiesta team, led by Chris Menold, delayed our monthly meeting to July 25 to accommodate the IPMS Nationals. Chris and the team are working towards an expanded and successful event, but cannot have a successful event without several volunteers, so please be prepared to volunteer come fall. As you know, Alamo Squadron has secured the entire New Braunfels Civic Center for our January 4, 2025 Model Fiesta 43.

Chris Menold has been in contact with Hobbytown and they have enthusiastically offered a space for us to meet and build, socialize, and

generally “bs” about models. This takes place every Sunday from 12:00 – 4:00 at Hobbytown, 1309 N. Loop 1604. All are welcome.

Our first Judge Training session, headed by our Model Fiesta Head Judge Dana Mathes, was held during the July 11 meeting. Dana said the session went well. As has been reported before, the Model Fiesta committee has committed to the Gold, Silver, Bronze (GSB) awards format for Model Fiesta 43. This format is where models are judged not against each other, but against a standard, as we have discussed at our monthly meetings. We will have our second Judge Training session of the Monthly Club Contest after the mid-meeting break at our upcoming August 1 meeting.

Our next meeting is on Thursday, August 1, starting at 6:30. The meeting is at Jordan’s Ford facility at 2411 Pat Booker Road, Universal City, TX 78148. The Demonstration will be Research for the ’67 Shelby Super Snake by Jonathan Griffith. The Monthly Contest theme is Open. And of course, we will have Work In Progress.

See Ya’, Keith

this issue

President’s Corner by Keith Rule

1967 GT500 Super Snake by Jonathon Griffith

1947 Galaxie Limited Fleetmaster Lowrider by Keith Rule

Alpine Miniatures US Combat Medic 1/35th Scale

by Henry Nuñez

Miscellany

1967 Shelby GT500 Super Snake

By Jonathan Griffin



In the 60's Goodyear wanted to promote their new Thunderbolt tires, so they contacted Carroll Shelby, and a North Texas dealership to put together a special car. He managed to secure a 427 side-oiler race engine that had been used in the GT40 Mk.II and it fit, sort of, with a few modifications, such as changing the oil pan, and moving the oil filter to a remote location on the driver's side fender well. As a result of this, and some tuning, the engine made 650hp, which was a MAJOR increase over the 355hp of the 428 ci engine that was standard in that car. Once it was built, it was tested at the racetrack with Carroll at the wheel, where he managed to pilot the car to an astonishing 170mph on 7.75x15 bias-ply whitewall tires. He tried to market it to a few dealerships to see if there would be any sales of the car, but the price of it was so prohibitive, that it ended up being the only one ever built. It's very recognizable by the Wimbledon White paint scheme with the Guardsman Blue triple strips and Shelby 10 spoke alloy wheels.

Kits:

AMT 1967 Shelby GT350

AMT 1966 Fairlane 427

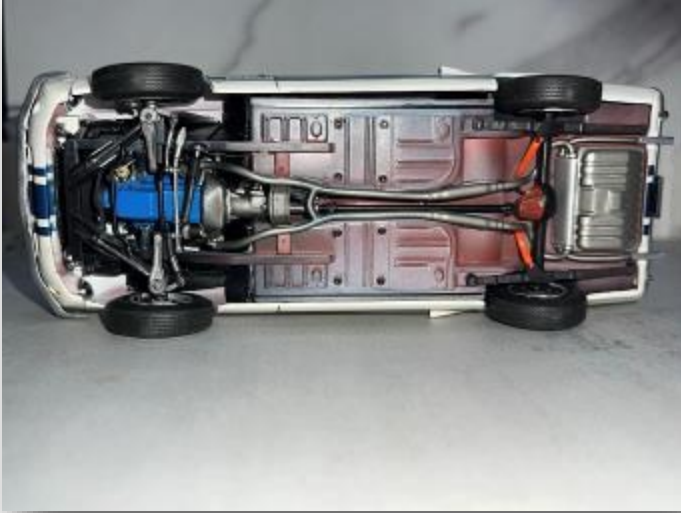
Engine:

For this build, I used the AMT 1967 Shelby GT350, and transplanted the 427 from the AMT Fairlane 427 as it is the most accurate version in this scale. I added numerous de-



tail upgrades, including a Holly carburetor from Fireball Modelworks with fuel lines, a wired distributor from MAD models, and a remote oil filter system from Off The Sprue. The paint was Ford Blue from DupliColor for the block, Tamiya Flat Aluminum for the intake and heads, Testors Models Master Steel Metalizer for the transmission casing,

and burnt metal for the shift linkage. The carburetor was painted a mix of gold and metallic gray. I also scratch built an oil dipstick and power steering pump dipstick from wire.



Assembly:

During assembly, I encountered a few issues with the shape of the nose cone and rear spoiler panels that created a bit of fitment problems, which were solved by setting them as close to straight, and then shaping the panels to match. I also used numerous measurements from the real car to measure out and paint the Guardsman Blue Stripes. During the front assembly, before I mounted the nose cone, I had to remove the grill, as it had the center mount high beam lights and the Super Snake had the California legal lights and a polished grille which would be replicated in photo etch. I replaced the kit hood with a corrected resin piece as the 1:1 car had additional vents for improved cooling and air pressure reduction under the hood. For the chassis assembly I used *a lot* of reference shots of GT500s and even the Super Snake to replicate the finish on the undercarriage suspension axles and various items such as the wheel wells and assem-

blies including the orange Koni shocks. I also added fuel and brake lines to the rear axle and from the rear to the master cylinder. For the interior I built it mostly from the box but added seatbelts and buckles as well as door handles, window crank and various interior bits from Model Car Garage. I also added a fire extinguisher from Off The Sprue and details from Keith Marks decals. I made a mixed color flocking of black with just a small amount of gray to make it look more accurate to the real car. I also reshaped the roll bar to make it fit correctly and not interfere with the roof shape. For some minor details I added



some steel braided lines from the engine to the oil filter to the oil cooler and back. The tires are from Fireball Modelworks and the Shelby Wheels are from a company called Plamoz which are no longer available.

Overall Impressions:

The build was surprisingly straightforward and while it was challenging, the result was, in my opinion, way more that worth the efforts. I highly recommend this kit even as the GT350.

Hope y'all enjoy, Jonathan



a m i 1967 **GT-350**
AUTHENTIC KIT **SHELBY**



1/25 SCALE



a m i '66 **Fairlane**
427



1/25 SCALE / ÉCHELLE

1 PLASTIC KIT / 1 TROUSSE EN PLASTIQUE

1947 Galaxie Limited Chevy Fleetmaster

By Keith Rule



I have been asked many times how I painted my 1947 Chevy Fleetmaster Lowrider. Alan asked me to write an article for the Navigator explaining the procedure. The most important decision when

building a lowrider is the paint scheme. It is also the most difficult and time-consuming. First of all, I painted this model twice. My first graphic design flowed with the body lines, which is always my first inclination when I am trying to dream up a custom paint job. This design was also purple and black with a touch of yellow/green. The purple/black combination was inspired by a beautiful purple and black '32 Ford Street Rod at last years Space City Shootout in Houston. After airbrushing the first design, I didn't like it, so I stripped the paint and primer down to the plastic. Then I thought "why do I always design with the flow of the body?" That thought led me to do just the opposite. I had no idea how this would work out. I experimented with a grid pattern and found that a 10mm x 15mm pattern would fit the dimensions of the body. The body was primed and sprayed silver, the planned pinstripe color, and the 10 x 15 pattern was laid out with thin strips of masking tape cut with double side by side number 11 blades. Now what? I thought about five different techniques I have used to paint cars:



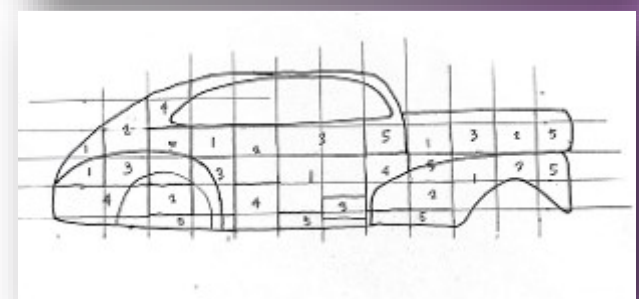
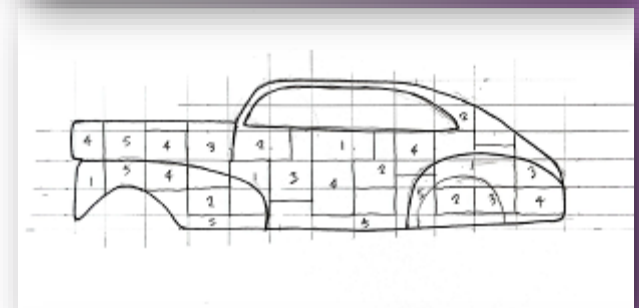
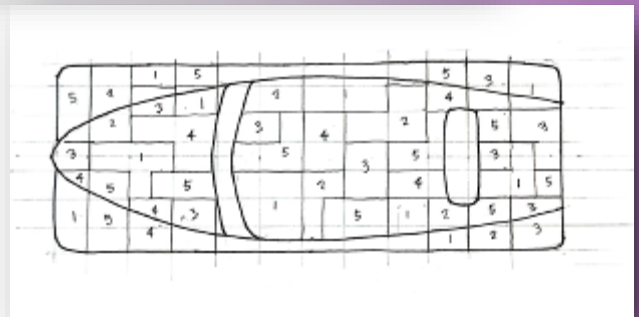
- **Marbleizing** – a technique where you spray a base color, then apply a contrasting color with a piece of sponge (practice this first). In this case it was flat black over candy purple.
- **The Lace Technique** - a technique where you spray a base color, then use a lace trim that is made to trim clothing (available on Amazon). You tape the lace close to the body and airbrush a contrasting colors) through it. You can move the lace slightly and airbrush again for even more variation. In this case, I airbrushed silver – and black over purple, moving the lace slightly.
- **Carbon Fiber Stippling** – again, you airbrush a base color, usually black or dark gray. Then you take an old stiff brush and stipple whatever colors you want (practice this first), usually silver, light gray, gunmetal gray, etc. In this case, I threw in some purple.

"...drives a little slower"



- **Clear Coat with Miniflakes** - Using House of Kolor paint airbrush a base color, mix mini-flakes in a clear, and airbrush. My base color was purple.
- **Clear Coat a Color** – this is just the basic clear coat over a base color. My base color was black.

It was clear that a straightforward 10 x 15 grid was not very exciting. I then created a 1:1 scale drawing of the top and each side of the Fleetmaster. With my five techniques, I managed to alter the 10 x 15 grid into a more interesting pattern on the drawings, labeling each area 1 through 5. I then went to the model and tried to match the drawings by cutting and moving pinstriping tape. Then, with a few pattern deviations at the rear slope, I had it. Thinking through the painting process, I created the Painting Plan per Item 19 on the Instructions included in this article.



...don't use no gas now"

The masking and airbrushing required was extensive. I kept thinking I would surely make a mistake, but I got lucky. Several coats of 2K clear

(don't remember how many) were needed to "bury" the painting techniques (similar to burying decals). It turned out much better than expected. When I started the project, I certainly didn't expect the project to win the awards it has.

The 1947 Chevy Fleetmaster Lowrider

Why a 1947 Chevy Fleetmaster Lowrider? I can't really say. I have seen so many early 60's Chevy Lowriders that I thought I would do something different. The Galaxie Limited Korean kit appealed to me.

As I described earlier, The interior was finished using embroidery thread laid out on two-sided tape creating panels that can be cut and fitted to the interior. I can't explain this process in words. I found a YouTube video explaining this technique when I searched "how to make a scale model Mexican blanket".

Other highlights include an open trunk with aftermarket speakers, batteries, and hydraulic pumps, wheels from spare parts, some body modifications, and semi-gloss black body trim.



Instructions

1. Mock-Up body components, check fit to interior, chassis, etc.
2. Cut out trunk. Plan and prep for hinging.
3. Build trunk space.
4. Dechrome sun visor and alter for pin fit to body.



5. Dechrome license plate bracket, taillight bezels, door handles, windshield wipers, sun visor, exhaust tip, and trunk handle.
6. Repair injection points under hood, trunk lid, and at headliner.
7. Cut away projection under front grille as needed. Cut away front bumper supports from frame.
8. Cut away rear projection at bumper. Repair slots. Cut away rear bumper supports from body.
9. Alter front grille and fill in and repair grille recesses at front of body.
10. Sand body to dull with 400-800 as needed. Sand off hood center ridge and trunk "Chevrolet".
11. Scratchbuild backing pieces for assembly of front fender unit to main body. Glue front fender unit to body.
12. Glue fender skirts to body.
13. Tape off for future glue.
14. Airbrush Tamiya Gray at both sides body, hood, trunk, license plate bracket, sun visor, taillight bezels, door handles, trunk handle, windshield wipers, and both mirrors.

... "knows every street, yeah"

Painting plan

1. Airbrush Tamiya Chrome Silver Base entire body, mirrors, and sun visor.
2. Apply pinstriping tape creating a 10 mm x 15 mm pattern.
3. Alter taping creating marbled areas (1). Mask all except marbled areas. Apply Tamiya Clear to seal pinstripe edges. Air-



brush MCW Candy Purple. Apply Tamiya Flat Black using sponge technique. Pull masking and mask marbled areas.

4. Alter pinstripe tape creating areas 2 and 4. Mask future areas 3 and 5. Airbrush Tamiya Clear to seal pinstripe areas, Airbrush Tamiya Purple at areas 2 and 4. Mask area 4. Apply lace pattern and airbrush Tamiya Flat Black at area 2. Shift lace pattern and airbrush Tamiya Chrome Silver at area 2. Pull pattern and mask area 2. Airbrush Tamiya Clear with HOK Miniflakes at area 4.
5. Alter pinstripe tape creating areas 3 and 5. Airbrush Tamiya Clear to seal pinstripe edges. Airbrush Tamiya Flat Black at areas 3 and

5. Mask as needed and apply carbon fiber stippling technique at areas 3.

6. Mask and airbrush Tamiya Chrome Silver at body side trim and sun visor trim.
7. Mask sun visor and body and airbrush Tamiya Flat Black at sun visor, license plate bracket, grille, door and window trim, tail-lights, door handles, exhaust tip, and trunk handle. Airbrush all with Tamiya Semi-Gloss Clear.
8. Using MCW 2K Enamel Clear Coat mix 2 parts clear to 1 part hardener to 1 part Mr. Hobby Leveling Thinner. Spray 1 Medium Coat. Cure several hours or overnight. Check for debris and sand out. Spray 1 wet coat. Cure several hours or overnight. Check for debris and sand out. Repeat for 1-5



... "take a little trip..."



more coats until happy with gloss. Black ink panel lines with .20 Rotring Isograph before final coat. Sand debris to flat with 3000. Polish with Meguiar's Ultimate Compound using Dremel and wool polishing attachment. Polish with Meguiar's Ultimate Polish using Dremel and wool polishing attachment.

9. Mask and airbrush engine compartment, underside of hood, underside of trunk, gas cap, and headlight buckets Tamiya Flat Black and then Tamiya Semi-Gloss Clear. Brush paint headliner and inside of fenders, etc. Tamiya Flat Black. Remove masks and drybrush engine compartment with Tamiya Gunmetal.
10. Clean and polish clear window parts with 1000, 2000, 3000, Meguiar's Ultimate Compound with Dremel as needed. Finish with Meguiar's Ultimate Polish with Dremel and Meguiar's Yellow Wax.
11. Install headlights, windshield wipers, side mirrors (from Trans Am kit), door handles, trunk handle, gas cap, and license plate bracket'
12. Airbrush hood hinges Tamiya Flat Aluminum and glue to hood. Install hood after engine compartment detailing.
13. Documentation photos.

Engine

1. Make notes on kit instructions
2. Dechrome Stromberg Carburetors and Edelbrock Manifold. Cut off air cleaners.
3. Airbrush parts Tamiya Gray Primer.
4. Airbrush and detail paint parts per notes on kit instructions.
5. Assemble per kit instructions.
6. Add aftermarket air cleaners

Chassis

1. Make notes on kit instructions
2. Dechrome speaker module.
3. Modify spare parts wheels to fit tires.
4. Mock-up suspensions and check stance. Modify as needed. Modify wheels/axles for solid mount.
5. Airbrush parts Tamiya Gray Primer.
6. Airbrush and detail paint parts per notes on kit instructions.
7. After delivery of aftermarket parts, layout trunk hydraulics and batteries. Glue rear trunk partition in place. Plan detail wiring. Choose colors for hydraulics and batteries and prime and airbrush.
8. Assemble per kit instructions.
9. Finish trunk space with flocking. Install hydraulics, batteries, and wiring.

"take a little trip..."

Interior

1. Make notes on kit instructions.
2. Choose silver, black, and purple embroidery thread colors for seats, door panels, rear

deck, and dash top. Choose colors for dash bottom, seat bases, side panels, arm rests, and carpet flocking.

3. Airbrush parts Tamiya Gray Primer.
4. Apply black wash to chrome dash inset and steering wheel.
5. Apply decals to dash.
6. Install gauge lenses.

7. Airbrush and detail dash and steering wheel.

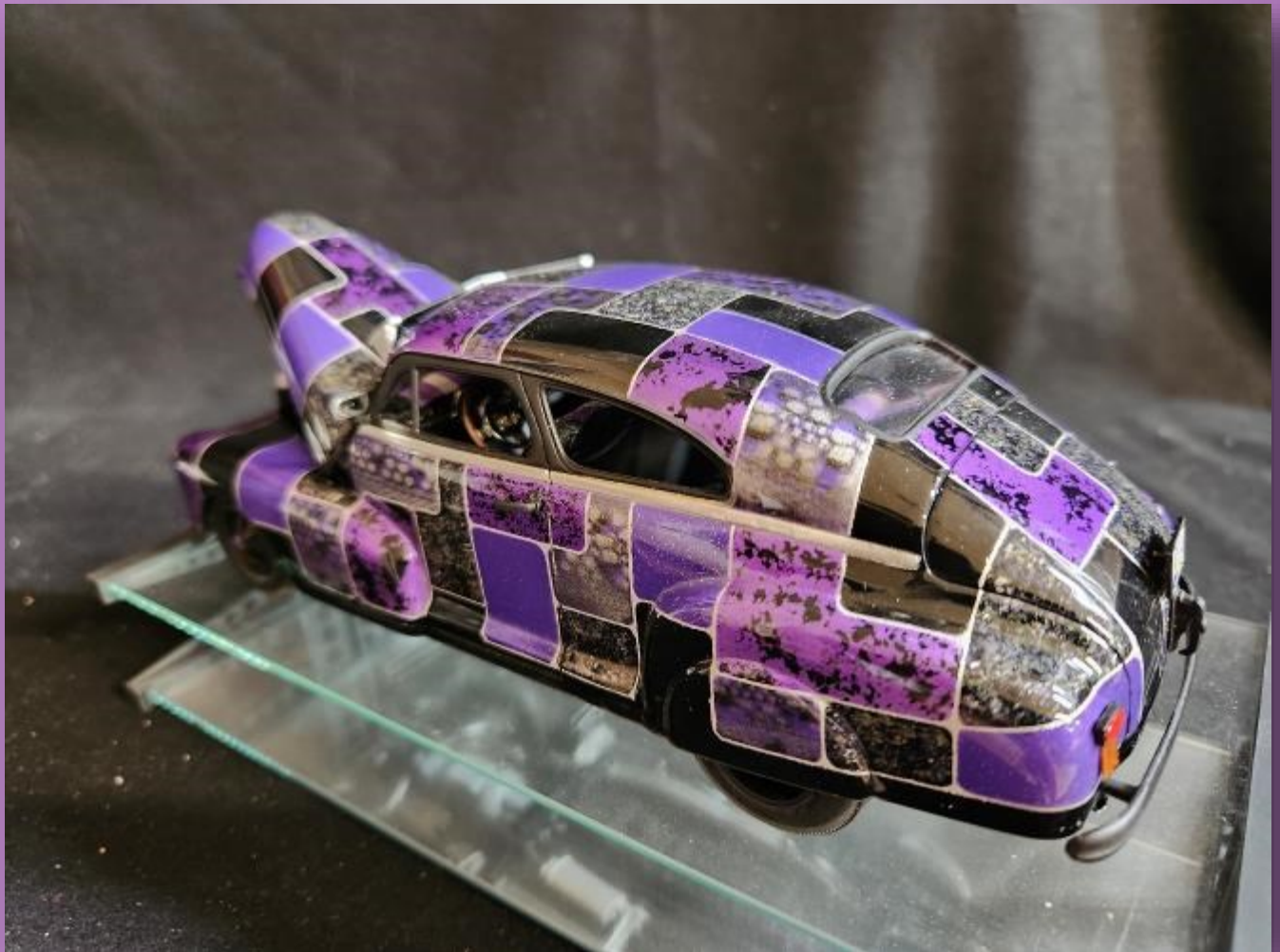
8. Make and install embroidery thread panels for dash, seats, door panels, and rear deck.

9. Apply flocking to floor.

10. Assemble per kit instructions.

11. Make and install front seat belts.

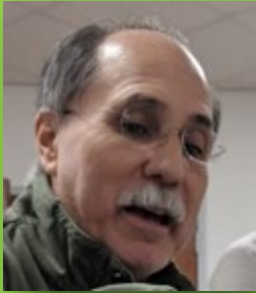
“...take a little trip with me...”



Alpine Miniatures

US Combat Medic 1/35th Scale

By Henry Nuñez



This is the latest 1/35 scale resin figure by Alpine Miniatures sculpted by Taesung Harmms, a master sculptor from the United States. When the figure came out I said to myself, I want to paint it.

The figure is made of soft resin material with very little to no clean up and excellent features. The gear and uniform is precisely sculpted to what a medic wore during the war. The figure was easy to assemble with just the two arms, two canteens and the head with the GI helmet already molded on.



Henry Nuñez' superb Combat Medic took Gold at 2024 Tulsa Historical Miniature Society of Northeast Show

First things first, how was I going to present this wonderful figure? I decided on a wood base with a 2" square top. The space would be somewhat tight but that was okay because I did not want too much empty space. Now I needed to fill that space with a background to

compliment my figure. This took most of my time experimenting what I wanted to put into my background. Remember that the figure is the featured piece. I decided to go into my box of goodies to find what I needed. I decided to put a wall ruin made of resin with stucco (Armand Bayardi) already sculpted on. The wall would work but it needed some depth so I applied Vallejo Plastic Putty to the molded stucco to

get that 3 dimensional look. I next painted the brick wall in various reds and orange using acrylic paints. I next painted the stucco in a off-white color. I highlighted the bricks and stucco and then applied a wash of flat black for weathering to tone down the color. I came back and added some more highlights to get the finish I wanted. I next had to fill in the rest of the space. Since the figure was a medic I decided to add medical objects to enhance the figure. I would add a folded stretcher from the Gecko Models, Allied Casualties on Stretchers kit but the stretcher needed more details so I added rivets to hold the canvas to the frame. I painted the litter in olive drab and wood for the handles. I added a plasma bottle made from clear



plastic sprue from an airplane kit. I hollowed out the bottle and glued another piece of clear sprue to it. I sanded the sprue down to form the bottle and shaped the neck with a lid.

I attached a lead wire to the bottle to form the

rubber tubing. I added a German jerry can painted in olive green with a white cross to signify it as a water can and also a wood plank weathered using Micro-Mark, Age-It Easy Weathering treatment for wood. The tin cup



placed on the wall was painted blue to break up the drab colors of the background. I finally added some bloody bandages made of tissue that would be placed at the feet of the medic.

Next came the base ground work. I used Liquitex Ceramic Stucco and let it dry hard and painted in earth tones then I attached the brick wall ruin to the ground base. Next came the final ground work by spreading Vallejo Acrylic Thick Mud covering the ground base. While it was still wet, I applied the grass tufts, rock debris and damaged bricks into the mud. I then placed the plasma bottle, water can, wood plank and the stretcher by leaning part of it on

the lower wall and sticking the other end into the mud. The base was now almost complete all I needed was to finish painting my figure and attaching it to the base.

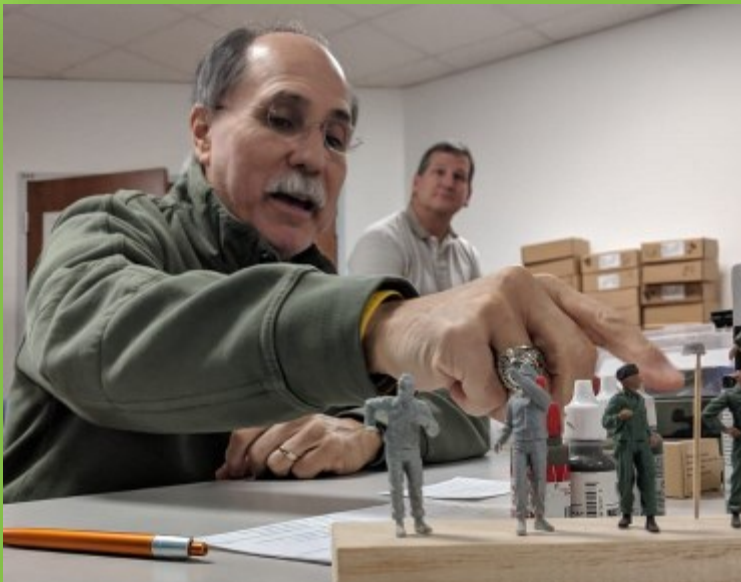
The figure would be painted in acrylics. I researched the appropriate jacket color (olive drab), wool trousers (dark olive brown), boots (brown leather), helmet (green olive) along with the red cross on white and the medical gear (canvas olive) he would be carrying. This would take me the most time because I had

to come up with the right mixes which I did and finally satisfied with the results after it was all done. The face was painted with acrylics. Shadows and highlights are very important when painting the face, clothing and gear because you have to create it to enhance the figure. Shadows and highlights have to go in the right places. I then attached the figure on the base where I wanted it

The U.S. Combat Medic placed Gold at the HMSNEO 2024 Tulsa Show in June. I really enjoyed constructing, painting the layout and the figure.

Acrylic paints used:

Vallejo, Vallejo Panzer Aces, Andrea, AK and Reaper



Henry Nuñez is Alamo Squadron's acclaimed figure painting artist. He is pictured here teaching a clinic.

A colorful poster for the Model Fiesta 43 Contest and Vendor Event. The background is purple with faint line drawings of various models. On the left is the IPMS/Denver Alamo Squadron logo, which features a cowboy hat with a Texas flag, a blue biplane, and the text "IPMS/DENVER ALAMO SQUADRON", "Established 1977", and "SAN ANTONIO, TEXAS". The main text reads "MODEL FIESTA 43" in large, bold, orange and white letters. Below that, in a teal banner, it says "CONTEST AND VENDOR EVENT". The date and time are "JANUARY 4TH // 9AM-4PM". At the bottom right, it says "New Braunfels Civic Convention Center". At the bottom left, it says "Subject theme: BIG SCALES MODELS ALL TYPE OF MODELS".

August Club Winners

Alpine Miniatures WW2 U.S.
Combat Medic

By Henry Nuñez



1/24 Scale 32 Hot Rod

By Keith Rule



1/35th Scale M60A2

By Michael Williamson



Houston Automotive Modelers Society (HAMS) Space City Shootout 2024



The HAMS Space City Shootout show took place on Saturday, 27 July just as I was wrapping up the August issue of the Navigator. Thought I was not able to attend, from all indications our HAMS friends put on another spectacular, fun and well run show. I am already planning to be there next year. Our Squadron President Keith Rule and Vice President David Auth were among those who traveled to Houston to participate. The all car contest had over 230 models and used the traditional 1, 2, 3 judging format. I will be looking to recognize more of our Alamo Squadron participants in future issues of the Navigator.

David Auth's Wins

- ⇒ Nissan 2000 Fairlady and MGB Rally Car
Fine Scale Modeler magazine photo shoot
- ⇒ Ford Bronco, 3rd Place, Box Stock
- ⇒ 2018 Nissan 370Z 2nd Place, Factory Showroom Stock
- ⇒ Mercedes SL500 1st Place, Showroom Stock
- ⇒ Nissan Skyline GT-R, 3rd place, Street Machine



Keith Rule's HAMMS Space City Shootout Wins



- 1997 Ford F150 - 3rd - Pickups
- 1939 Chevy Wagon Rod - 2nd - Hot Rods
- 1932 Ford Roadster
 - 1st - Hot Rods, Best Interior
- Shelby Cobra - 1st - Street Machines
- 1932 Ford Tow Truck - 1st - Commercial
- 1947 Chevy Fleetmaster Lowrider - 1st - Lowriders, Best Paint
- McLaren F1 GTR
 - 1st - Closed Wheel Competition, Best Race Car
- Chevy Tractor & Tanker Trailer
 - 1st - Intermediate Scale
- BMW 500 with Sidecar
 - 1st - Motorcycles, Best in Show





Date	Event	Location
July 27	<u>2024 Space City Shootout Model Car Contest and Scale Automotive Expo</u>	Seabrook, Tx
Sep 14	<u>SuperCon 2024</u>	Arlington, Tx
November 9	<u>Austin Scale Modelers Society 2024 "Capitol Classic"</u>	Williamson County Expo Center 5350 Bill Pickett Trail, Taylor TX
January 4 2025	<u>Model Fiesta Cuarenta y Tres MF (43)</u>	New Braunfels Civic Center 375 S. Castell Ave New Braunfels, TX.

Editor's Note: Below are some of our 2024 IPMS National winners from Alamo Squadron members. I will work to recognize other winners in future issues.



Chris McLain took third in Category 608: "Mecha from Kits" with this Maschinen Krieger Mk.44 "Dragonfly" built from the 1:20 scale Hasegawa Mk.44 "Whiteknight" kit



Dana Mathes took scored a couple of second place awards in Modern Armor-NATO with this Conqueror II and Collection category with his Main Battle Tanks



Adam Stephenson took second place in the Basic Build category Red White and Blue subject with this beautiful 1/48 scale Tamiya F-14A





Kent Knebel talking about his intricate multi model diorama.



Judging experts Rob Booth, Dana Mathes and Lee Forbes refine new judging procedures for Model Fiesta 43



Webmaster Extraordinaire Mario Fernandez talks about the new automated registration and other cutting edge features of the Model Fiesta 43 Website

July Meeting



Chris Lenahan shows us his 3D printed robot that he reposed to look like it is dancing. He calls it: "Singing in the Rain"



John Pham share details about his beautiful 1/48 scale A1 Skyraider



John Kress describes intricate masking needed to replicate the Union Jack paint scheme on Austin Power's "Shaguar".

Local Hobby Shops and Info

Dibbles Hobbies

1029 Donaldson Ave,
San Antonio, TX 78228
(210) 735-7721

Hill Country Hobby

9355 Bandera Rd Ste-118
San Antonio, TX 78250
(210) 681-2007

Hobby Town

1309 N Loop 1604 W
Vineyard Shopping Center,
Suite 101
San Antonio, TX 78258-4769
(210) 236-5527



Model Fiesta Cuarenta y Tres (43)

<http://www.modelfiesta.com>



For IPMS Membership
information please visit:

<https://myipmsusa.org/>

Go to membership page



IPMS WEBSITE OF THE YEAR!

[http://www.alamosquadron.com/
index.html](http://www.alamosquadron.com/index.html)



Alamo Squadron Facebook

[https://www.facebook.com/
groups/114044928625406](https://www.facebook.com/groups/114044928625406)



Navigator Editor

Alan Larrumbide

larrumbide@sbcglobal.net

